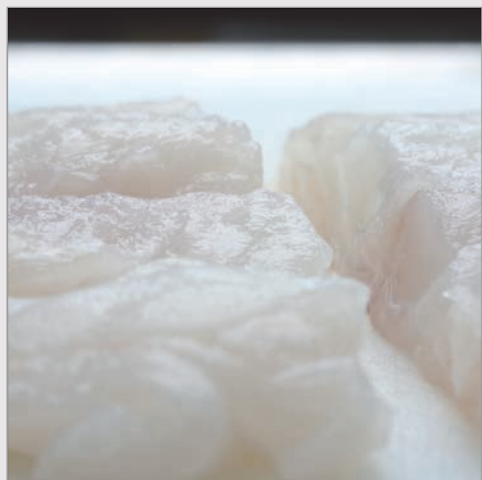
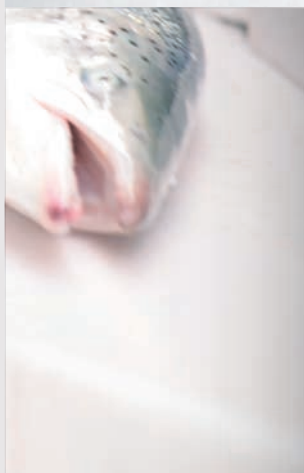
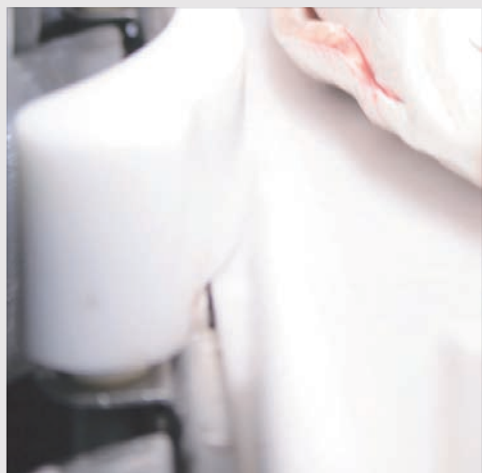
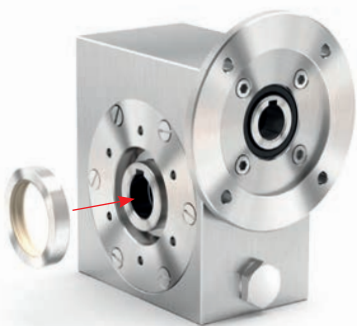


Fish
processing
equipments



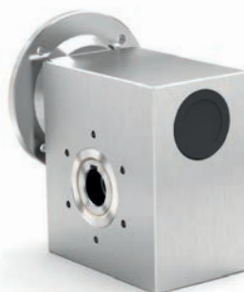
Stainless steel worm gearboxes

Features - Caratteristiche riduttori a vite senza fine in acciaio inox



Twin viton seals with stainless steel shield IP69K certified

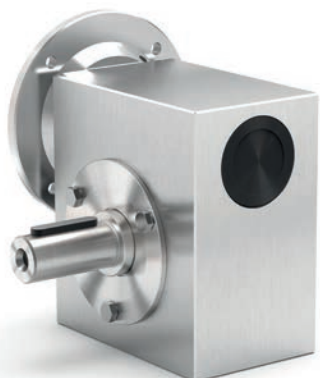
Anelli di tenuta in viton con schermo protettivo in acciaio inox; Certificazione IP69K



Mounting holes on both side of the housing for universal mounting



Fori di montaggio in entrambi i lati della cassa



Output shaft in AISI 316L and special cover for full seals protection

Mozzo e albero in uscita in AISI 316L e coperchietto protettivo per anelli paraolio



New cover with O-ring

Nuovo coperchietto protettivo per anelli paraolio chiuso con o-ring



Removable hollow shaft with key for safe torque transmissions

Albero cavo removibile con chiavetta mozzo/corona



High tech housing finishing

Finitura speciale sulla cassa