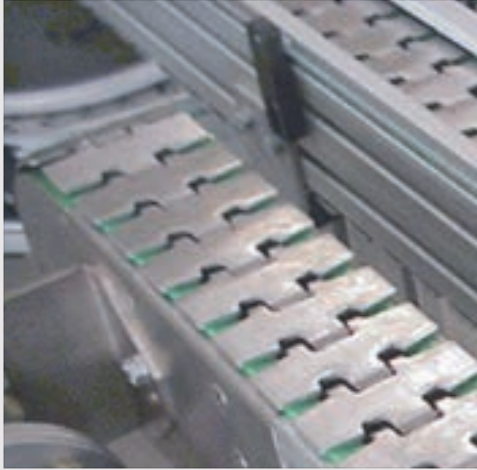
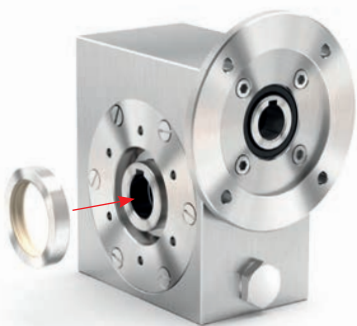


Food  
processing  
industry



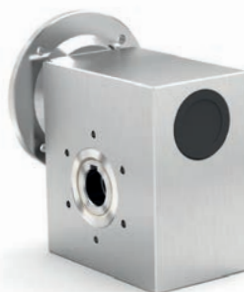
# Stainless steel worm gearboxes

Features - Caratteristiche riduttori a vite senza fine in acciaio inox



**Twin viton seals with stainless steel shield IP69K certified**

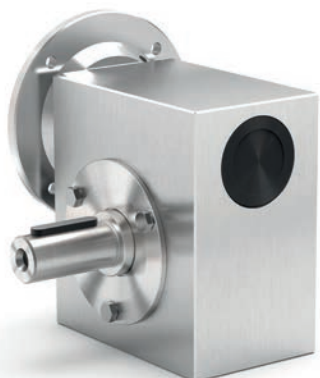
*Anelli di tenuta in viton con schermo protettivo in acciaio inox; Certificazione IP69K*



**Mounting holes on both side of the housing for universal mounting**



*Fori di montaggio in entrambi i lati della cassa*



**Output shaft in AISI 316L and special cover for full seals protection**

*Mozzo e albero in uscita in AISI 316L e coperchietto protettivo per anelli paraolio*



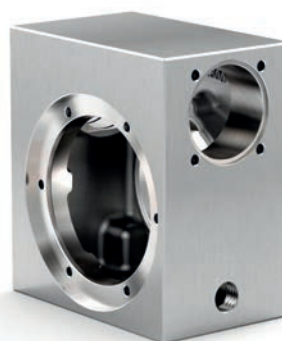
**New cover with O-ring**

*Nuovo coperchietto protettivo per anelli paraolio chiuso con o-ring*



**Removable hollow shaft with key for safe torque transmissions**

*Albero cavo removibile con chiavetta mozzo/corona*



**High tech housing finishing**

*Finitura speciale sulla cassa*